

## Systems Department

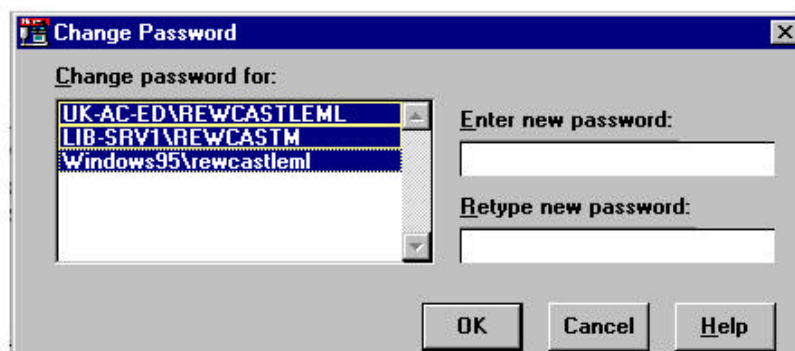
### Techtip Number 12 - Changing your password

Every 100 days as a security precaution your login to lib-srv4 (win95) will expire and you will have to change your password. This password must not be anything you have used before and has to be at least 5 characters and should include a non alpha character such as a punctuation mark or a number. You will be advised to change your password by this screen:



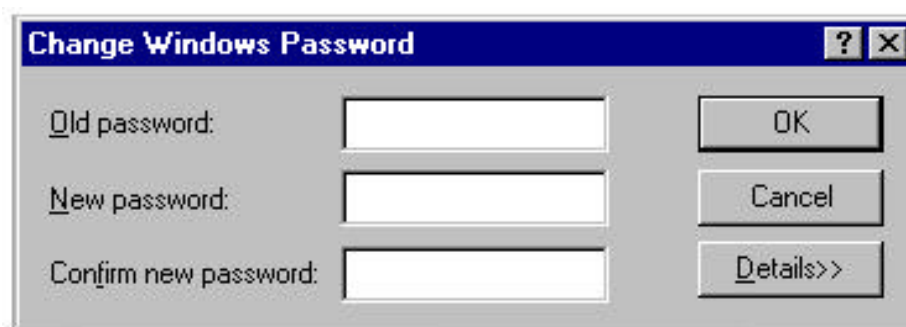
Choose **YES** or you might find you run out of grace logins and not be able to login at all.

Then the following box will appear:



Enter a new password in the first box. Use [tab] to go to the retype box and confirm your password (type it again). Then click OK to accept the password.

Then you will get this box:



**You must CANCEL this box**

We don't use a windows password so this is not needed. We have a lib-srv4, and lib-srv1 password only.

If you have any further problems contact [helpdesk@srv4.lib.ed.ac.uk](mailto:helpdesk@srv4.lib.ed.ac.uk)